

South 1 Vision | Carroll Gardens, Cobble Hill, Columbia Street Waterfront District

Focus Area Goals



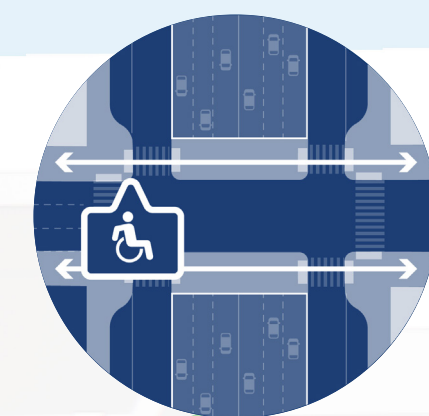
Stitch

Improve connectivity and expand community amenities along Hick St. through improved crossings and pedestrian space



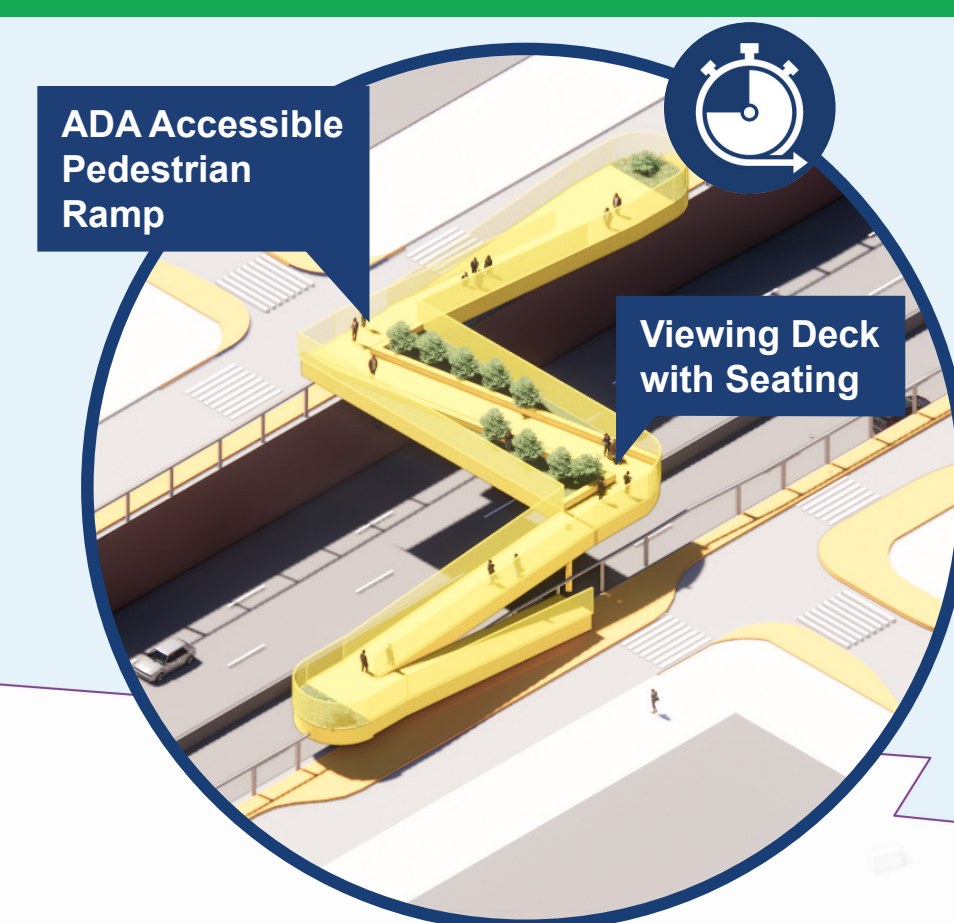
Integrate

Strategically cap sections of the BQE in Carroll Gardens and Cobble Hill for new open space and community-oriented uses



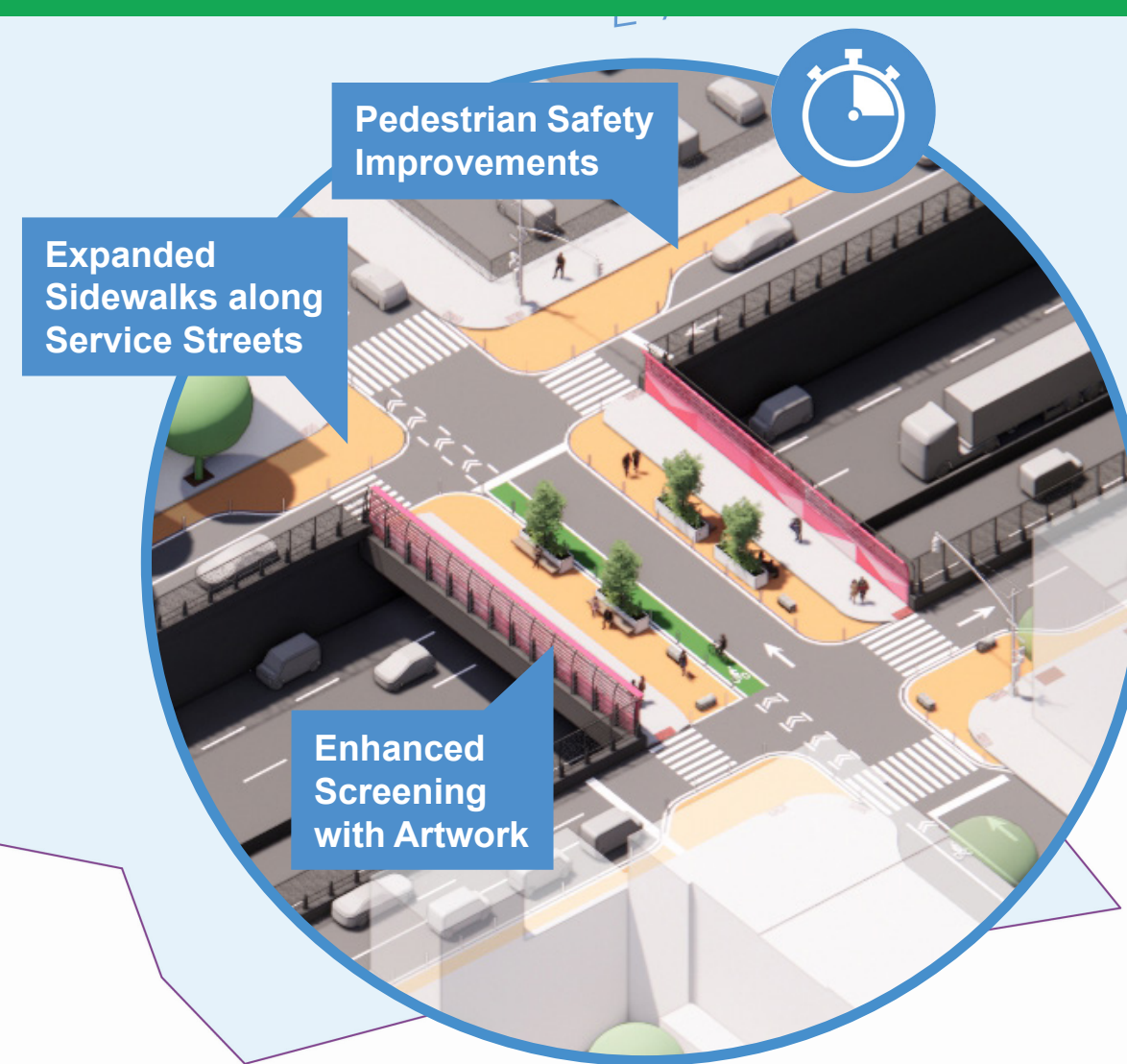
Connect

Improve safety and ADA accessibility at key crossings over the BQE



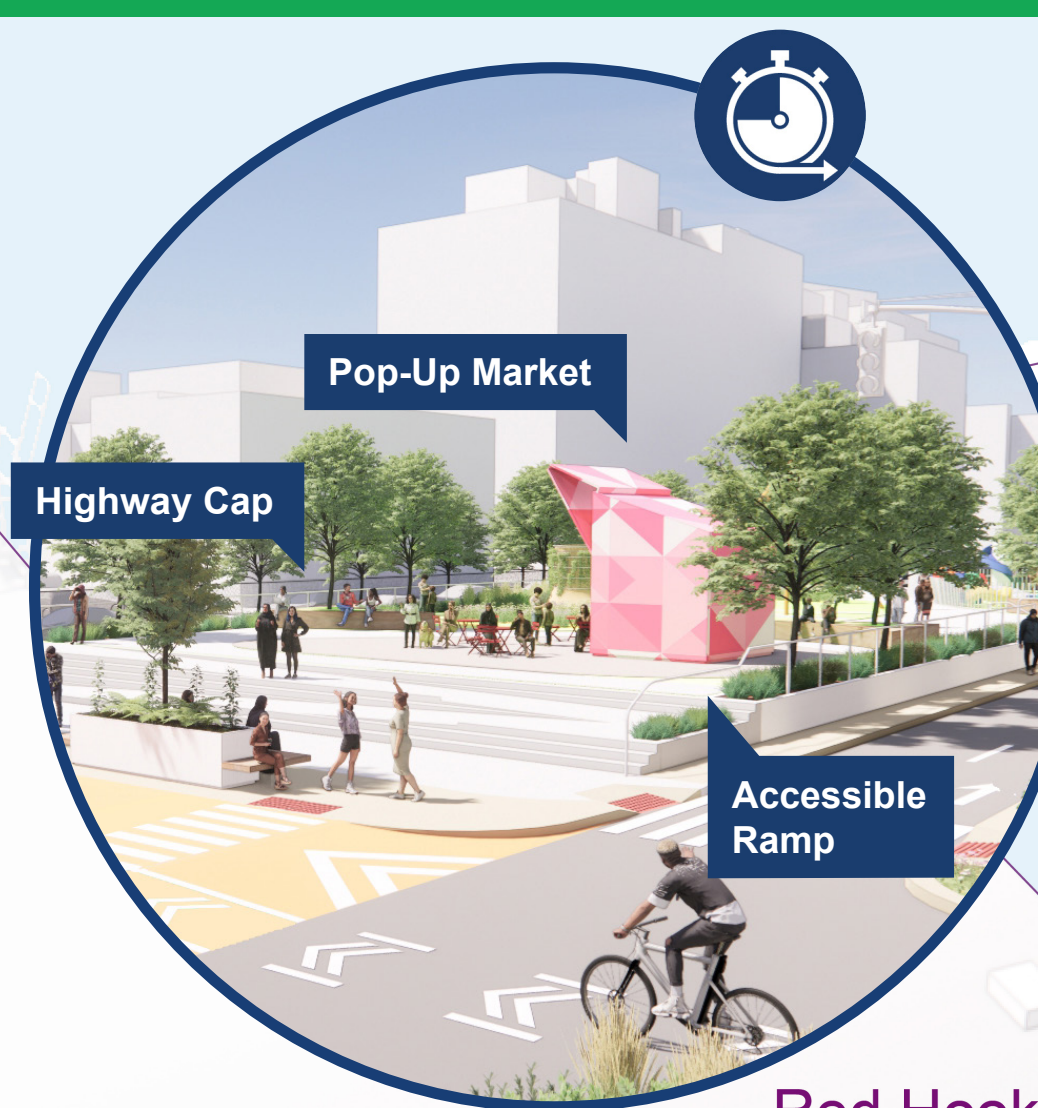
1 Summit Street Pedestrian Bridge

Reimagined, fully accessible pedestrian bridge with signature public space and viewing platform



2 Union & Sackett Street Park Overbuild

Full or partial highway cap with open space and community amenities



Red Hook Container Terminal

South Brooklyn Ferry

Brooklyn Bridge Park

Van Voorhees Playground

Congress St

Clinton St

Cobble Hill

Court St

Van Brunt St

Columbia Street Waterfront District

Union St

Sackett St

Hicks St

Kane St

Henry St

Hugh L. Carey Tunnel

Red Hook

Rapelye St

Woodhull St

Carroll Gardens

to F G Bergen St on 2nd Pl

3 DiMattina Playground Connector

Relocated BQE on-ramp combined with partial highway cap connecting schools and playgrounds

4 Kane Street Community Bridge

Enhanced pedestrian connection between Cobble Hill and Columbia Street Waterfront District

Legend



Near Term Vision



Medium Term Vision



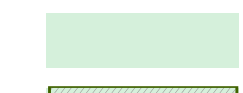
Long Term Vision



Enhanced Connections



Enhanced Pedestrian Spaces



Existing Parks



Proposed Capping



Existing Conventional Bike



Existing Shared Bike Lane



Existing Protected Bike Lane



Proposed/Enhanced Bike Lane



Existing Subway Stop



Existing Ferry Stop



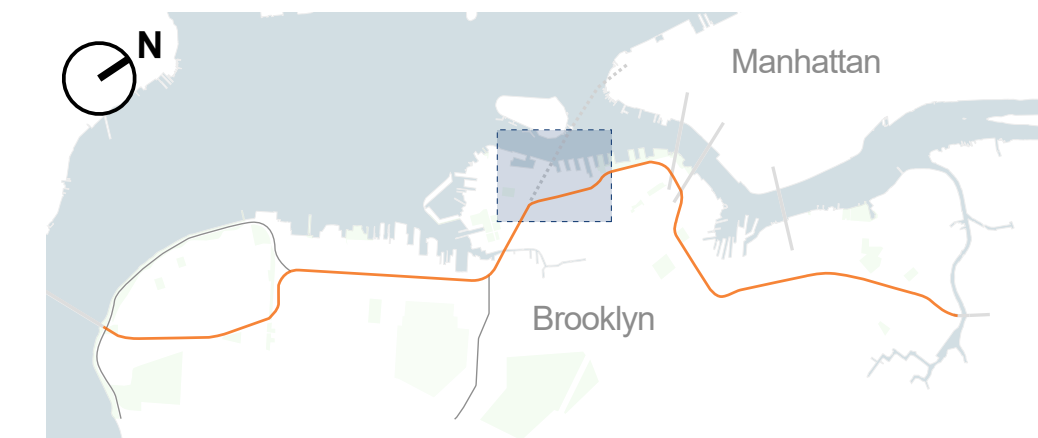
Redesigned ADA Accessible Pedestrian Bridge



Proposed Community Amenity



Proposed Park Space



Market use will be a limited duration pop-up.

Capping would need to be developed in coordination with NYSDOT. Vent structures, designed to meet federal highway standards, would be built throughout the park as required. NYCDOT will prioritize partnerships with local organizations to maintain these spaces.

South 2 Vision | Gowanus, Park Slope, Red Hook

Focus Area Goals



Stitch

Encourage safe cross-BQE connections between Red Hook, Gowanus, Carroll Gardens, and the Columbia Street Waterfront District



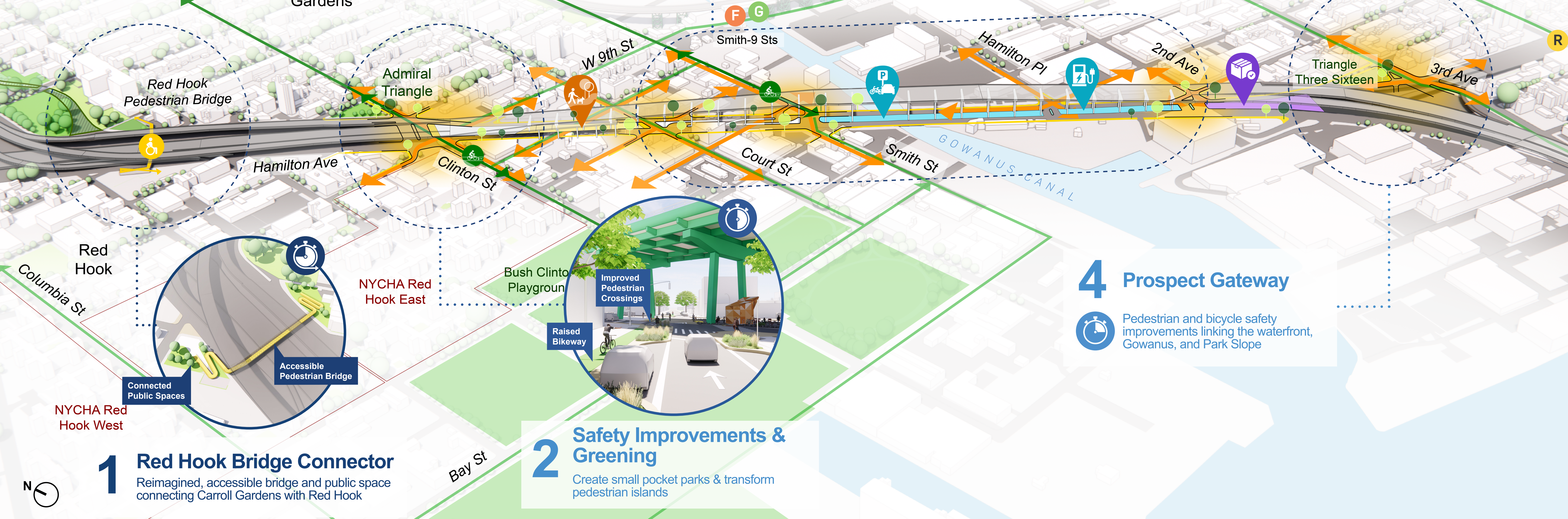
Repurpose

Highlight the iconic Gowanus Viaduct with improved medians that stitch Red Hook and Carroll Gardens together



Connect

Ameliorate complex intersections at key interchanges with safety and public realm improvements



Legend

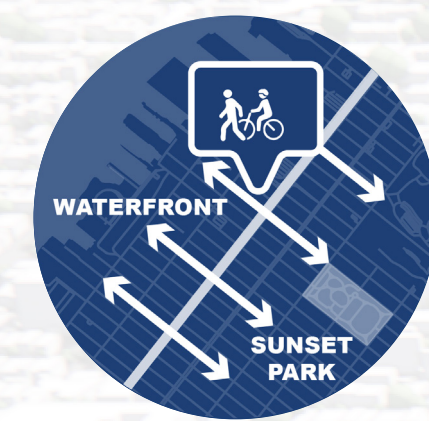
- | | | | |
|--------------------|----------------------------|---|------------------------------|
| Near Term Vision | Enhanced Connections | Existing Protected Bike Lane | Existing EV Charging Station |
| Medium Term Vision | Enhanced Pedestrian Spaces | Proposed/Enhanced Bike Lane | Proposed EV Charging Station |
| Long Term Vision | Existing Parks | Existing Affordable Housing | Proposed Metered Parking |
| | Existing Subway Stop | Redesigned ADA Accessible Pedestrian Bridge | Proposed Microhub |
| | | | Proposed Community Amenity |



Market use will be a limited duration pop-up.
Partnerships with NYS DOT is required for open space, recreation, and market activations; overhead protections will be considered to ensure a safe environment. NYC DOT will also prioritize partnerships with local organization to maintain these spaces.

South 3 Vision | Sunset Park

Focus Area Goals N



Stitch

Enhance connections across the BQE for pedestrians and cyclists and transit users to neighborhood destinations from Sunset Park to the industrial waterfront



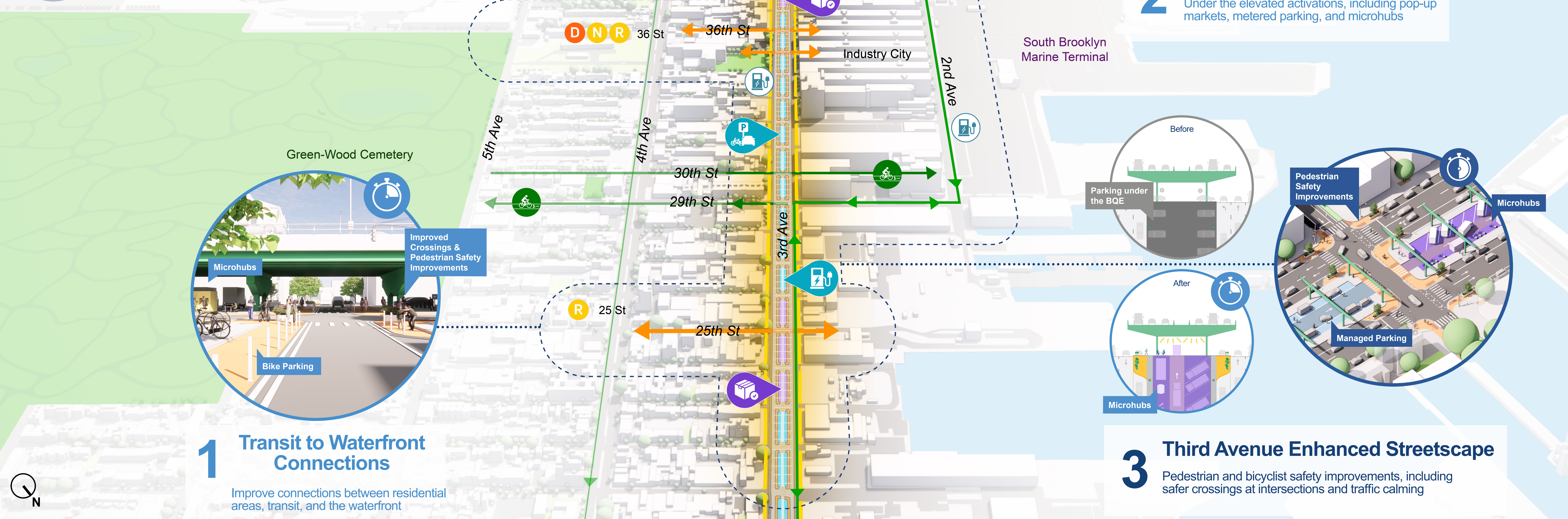
Green

Green 3rd Avenue through plantings and increased pedestrian space



Manage

Explore managed parking, freight and microhubs, and more under the 3rd Avenue viaduct



Legend

- | | | | | |
|--------------------|----------------------------|------------------------------|------------------------------|----------------------------|
| Near Term Vision | Enhanced Connections | Existing Protected Bike Lane | Existing EV Charging Station | Proposed Market |
| Medium Term Vision | Enhanced Pedestrian Spaces | Proposed/Enhanced Bike Lane | Proposed EV Charging Station | Proposed Community Amenity |
| Long Term Vision | Existing Parks | Existing Ferry Stop | Proposed Metered Parking | |
| | Existing Subway Stop | | Proposed Microhub | |



Market use will be a limited duration pop-up.

Partnerships with NYS DOT is required for open space, recreation, and market activations; overhead protections will be considered to ensure a safe environment. NYC DOT will also prioritize partnerships with local organization to maintain these spaces.

South 4 Vision | Bay Ridge, Bensonhurst, Dyker Heights, Fort Hamilton



Legend

- | | | | |
|--------------------|----------------------------|------------------------------|----------------------------|
| Near Term Vision | Enhanced Connections | Existing Protected Bike Lane | Proposed Community Amenity |
| Medium Term Vision | Enhanced Pedestrian Spaces | Proposed/Enhanced Bike Lane | Proposed Park Space |
| Long Term Vision | Existing Parks | Existing Subway Stop | |
| | Proposed Capping | Existing Ferry Stop | |

Market use will be a limited duration pop-up.
Capping would need to be developed in coordination with NYSDOT. Vent structures, designed to meet federal highway standards, would be built throughout the park as required. NYCDOT will prioritize partnerships with local organizations to maintain these spaces.

