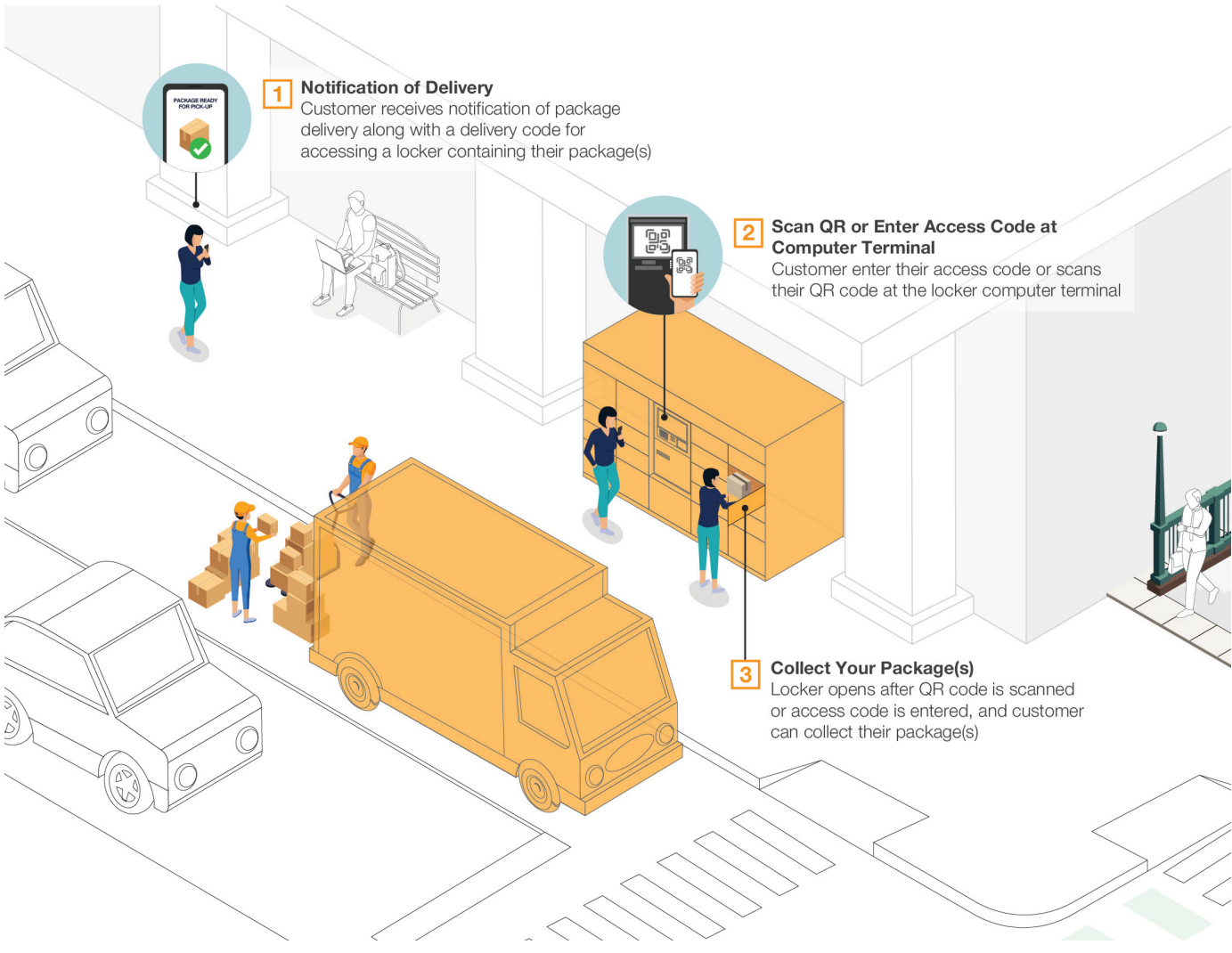
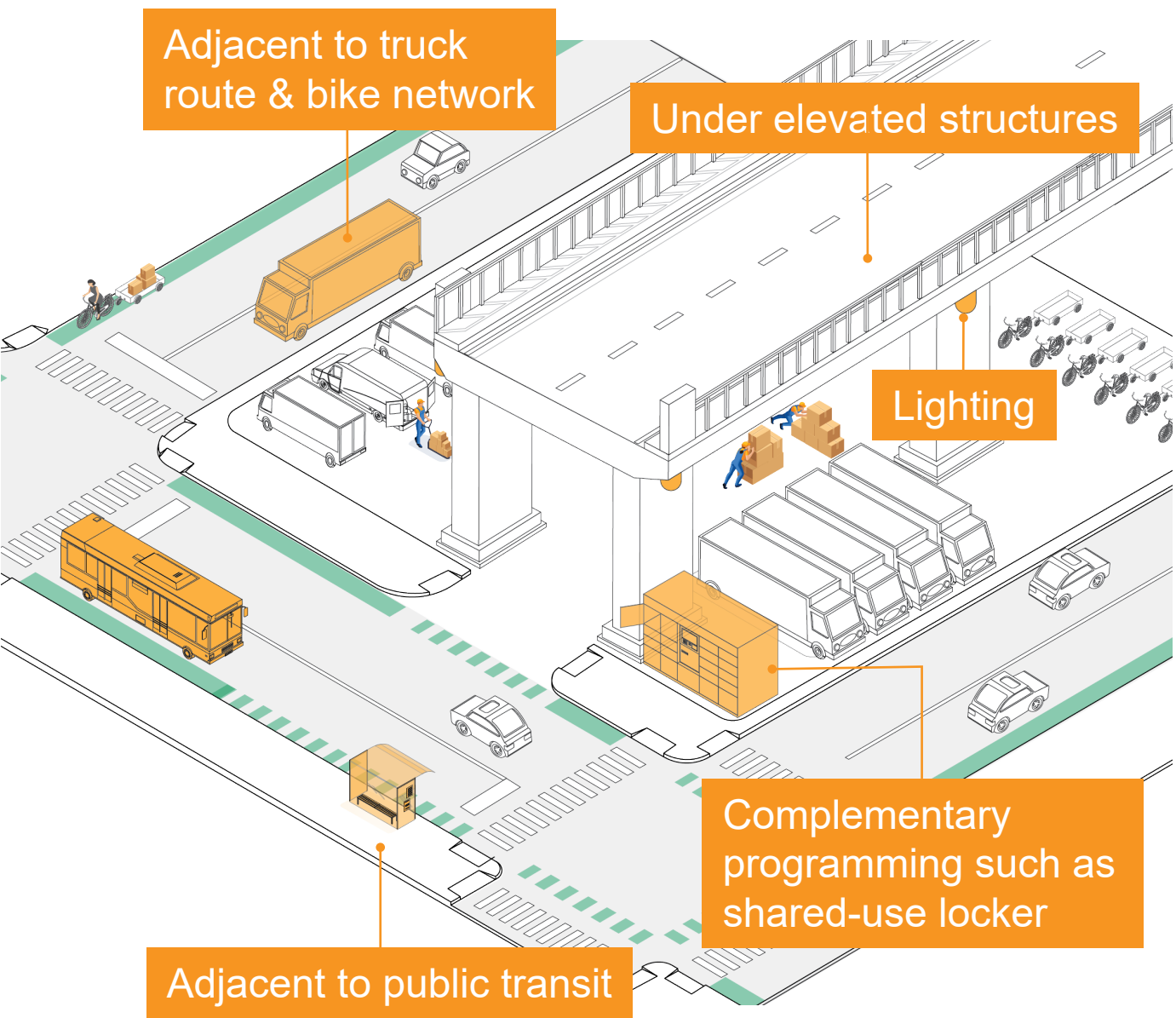




# Freight and the BQE



## Microhubs Pilot Program

The pilot program will include multiple phases, with Phase 1 anticipated to begin in late 2023/early 2024. NYC DOT will launch approximately 20 local delivery hub sites, testing both curbside and off-street hub locations, with some locations proposed under the BQE. Locations will be selected based on: proximity to high density areas with mixed land use; proximity to truck routes, transit, bike lane networks; and engagement with local communities and businesses.

## LockerNYC Pilot Program

The LockerNYC pilot program, announced in summer 2023, will allow New Yorkers to conveniently receive and send packages using secure lockers on public sidewalks, cut down on package thefts, and reduce delivery truck trips. The pilot will include 15 locations and offer customers free 24/7 access. The program will be available to anyone who is interested and, unlike other delivery lockers, the LockerNYC pilot will be available across multiple participating delivery carriers.

## Off-Hour Deliveries (OHD)

NYC DOT's Off-Hour Deliveries (OHD) program, introduced first in 2010, encourages goods delivery during the off-peak hours of 7 pm and 6 am in efforts to decrease congestion and truck emissions within NYC, specifically Midtown and Lower Manhattan and the downtown areas of Brooklyn and Jamaica where there are high pedestrian volumes and limited curb space. OHD allow drivers to leave goods in a safe and secure location, provides companies greater scheduling flexibility and store owners the ability to have products on shelves before opening.



## Truck Route Network Update

NYC DOT is currently evaluating the city's truck route network in consultation with agencies, residents, and representatives from businesses, environmental and climate justice organizations, street safety organizations, industrial business zone administrators, and the trucking, logistics and last-mile delivery industries. The goal is to improve safety, increase visibility, reduce traffic congestion and emissions, and reduce vehicle miles traveled, while supporting the growth of our economy and jobs, so that goods can be delivered in a safer and more sustainable way.

## Greening the Last Mile

The City supports the transition to zero emission truck fleets, increasing the adoption of commercial cargo bikes for last-mile deliveries, and other sustainable last-mile delivery approaches. DOT and EDC are developing a citywide electrification strategy, examining locations to install a network of up to 100 publicly accessible chargers to support the transition to electric trucks by 2026. DOT is also actively working to expand the Clean Truck Program to Industrial Business Zones citywide by offering incentives to truck owners to replace their old polluting vehicles with cleaner new ones.

## Blue Highways

NYC DOT and the NYC Economic Development Corporation (NYCEDC) are committed to encouraging the use of NYC's waterways to move goods into and around the City. Activating our marine facilities for freight will reduce traffic congestion and air pollution caused by our overreliance on trucks, and is a key part of the City's broader greenhouse gas emissions reduction strategy. The City is interested in modernizing existing marine infrastructure, expanding access to the waterfront, and helping to develop a sustainable model for last mile delivery that minimally impacts neighboring communities.





# Parking under the BQE



Metered Parking along Meeker Ave from Morgan Ave to Graham Ave



Metered Parking at 3rd Ave. & 36th Street

## Metered Parking under the BQE

NYC DOT manages parking meters on streets (and in municipal parking facilities). The installation of parking meters manages parking space and supports efficient curb management by encouraging shorter parking sessions and increasing parking availability in high demand areas. Metered parking allows more people to park during the day for shopping and deliveries, reduces double parking, and makes streets safer and less congested overall. Metered parking locations can be found under the elevated sections of the BQE on Meeker Ave between Morgan Ave and Graham Ave and between Graham Ave and Metropolitan Ave, and on 3rd Ave between 18th St and 43rd St.



EV Charging at Meeker Avenue between Metropolitan Avenue & Rodney Street



EV Charging at 3rd Avenue & 34th Street

## EV Charging & Parking under the BQE

NYC has launched a citywide Electric Vehicle Pilot Program to provide 100 on-street parking spaces for electric vehicles (EVs), where EV's are able to plug in for low-speed (Level 2) charging. NYC DOT selected curbside locations based on projected demand for charging, geographic diversity, and input from local elected officials and community stakeholders. NYC DOT also collected input from the public on where chargers should be installed. Vehicles parked in these spaces but not actively charging may be ticketed by NYPD. Two EV charging locations can be found under the BQE at Meeker Avenue at N 6th Street/Metropolitan Avenue/Rodney Street and on 3rd Avenue at 34th Street.



Zipcar Reserved Car Share Parking on Congress Street & Hicks Street



## Car Share near the BQE

NYC DOT's Carshare program designates dedicated parking spaces for the use of eligible carshare organizations (Zipcar, Getaround, and Truqit). These parking spaces are located at curbside locations (and in municipal parking facilities) citywide and are in pairs at the corners of residential, unmetered blocks. The curb regulation OTHERS NO STANDING means that non-carshare vehicles may not stand at this location. Any vehicle other than the designated Carshare vehicle may not wait or stop to load or unload packages or merchandise at the curb, although a driver may stop to expeditiously drop off or pick up passengers.





# Pedestrian, Bike, and Transit Improvements

DOT has ongoing plans to install EV chargers, secure bike parking, and e-bike charging and amenities along the BQE corridor.

- 1
- Street Improvement Projects on McGuinness Blvd
- 2
- Street Improvement Projects on Meeker Ave from Apollo St to Metropolitan Ave
- 3
- Grand St, Metropolitan Ave, Morgan Ave – Street Improvements
- 4
- Park Ave & Grand Ave Street Improvements
- 5
- Park Ave Ramp Improvements
- 6
- Park Ave - Ingersoll Houses Safety Improvements
- 7
- Sands St/Jay St Bike and Ped Intersection Improvements
- 8
- DUMBO Neighborhood Transportation Study
- 9
- Red Hook Traffic and Truck Study
- 10
- Reconstruction of Columbia Street Area - Phase 2
- 11
- 4th Ave Safety Improvements
- 12
- 3rd Ave Corridor Study and Pedestrian Ramp Improvements
- 13
- Meeker Ave Bike Lane
- 14
- Ashland PI & Navy St Protected Bike Lane
- 15
- 9th Street, Smith Street to 3rd Avenue Protected Bike Lane
- 16
- Brooklyn Queens Waterfront Greenway Connections:  
• Hamilton Ave Gowanus Connector  
• Sunset Park North
- 17
- Sunset Park South Brooklyn Queens Waterfront Greenway Connection Study
- 18
- “Destination: Greenway!”: Improvements Leif Ericson Park - 5th Ave to 2nd Ave
- 19
- Red Hook Coastal Resiliency Project

